



One – Camera System with full integrated Digital Camera for pictures in High Resolution

The economic solution for users who prefer to benefit from the fastest Videodermoscopy as well as from the high resolution digital pictures. In MoleMax I Plus users can profit from all known MoleMax vantages such as easy and fast handling, hi resolution imaging and extensive Software options.



MoleMax I Plus vantages:

- ☑ Software Release 8.0 including all the latest functions
- ☑ User defined screen resolution
- ☑ Video Camera for macro- and micro pictures (Polarized)
- ☑ Optical magnification up to 100x for small nevus
- ☑ Full integrated and software controlled Canon Digital Camera for pictures in High Resolution, including polarization interface
- ☑ Monitoring and Clinical Audit for complete clinical analyse including histopathology
- ☑ New polarized ELM interface
- ☑ New multifunctional handle (camera control & rechargeable accu)
- ☑ Unique new camera software control
- ☑ Camera live image on monitor

Options:

- ☑ Fluid dermoscopy up to 100x magnified
- ☑ Mole Score – Fully automatical identification of the risk factor
- ☑ Integrated Body Mapping option for full body mapping documentation with automatic detection of new or changed nevus

MoleMax Advantages:

- ☑ No immersion oil or contact fluids for digital Dermatoscopy required, thanks to the unique DMS patented cross polarization illumination
- ☑ Integrated mouse control in camera systems for easy software control and handling
- ☑ User friendly system, allows equipment to be operated from the camera during examinations
- ☑ Automatic recognition of ELM or macro imaging mode ensures fast and easy examination
- ☑ Logical linking of macro, close up and ELM image as well as additional import of histopathological images
- ☑ Reliable software, proved by more then 1500 users in over 45 countries worldwide



MoleMax I Plus

SOFTWARE



MOLEMAX EXPERTIZER PLUS

The basis of this unique, future oriented program is a histopathological secure database of images of pigmented lesions taken with MoleMax. The program package includes image analysis functions based on state of the art technology, and uses the clinically well-known ABCD Rule or Seven Point Checklist to support the classification of lesions being diagnosed.

TRENDING

Clinical Audit and Quality assessment;
Macro-, Micro-, Histo-Images over time per patient
Including all details, scores and comments

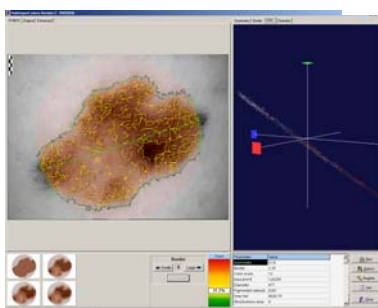


REAL TIME FOLLOW UP

Images taken at different dates can be compared in real time. This allows you a reliable comparison of mole alterations over long periods.

ADAPTER – FLUID (Option)

Apart from standard polarized ELM adapters, ELM Adapters for classic fluid dermoscopy are available. Choose from 20x up to 100x magnification

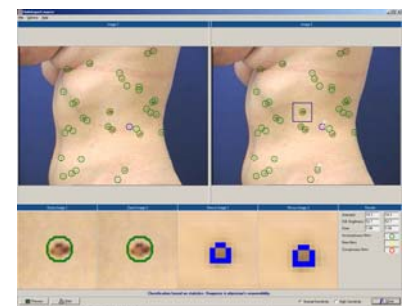


AUTOMATIC MOLE SCORING (Option)

Mole Expert Micro automatized scoring for moles and pigmented skin lesions. Not a final diagnosis but a risk score.

AUTOMATIC BODY MAPPING (Option)

The “body-mapping” function allows you to make photographic documentation of the entire body possible based on 33, or for quick examinations on 10, preset body segments. New and changed moles are recognized automatically.



© 2009 by Derma Medical Systems